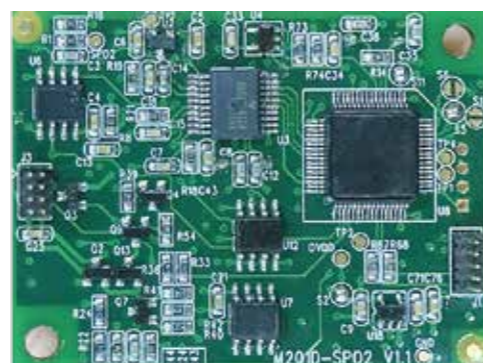
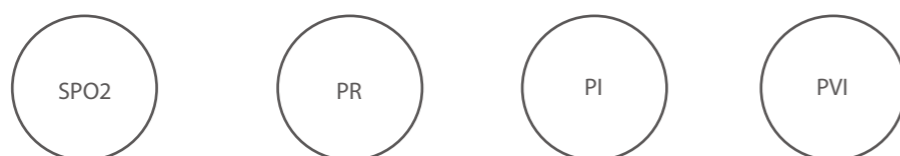


# Pulse Arterial Oxygen Saturation Module MSPO2

The MSPO2 module is used to monitor the patient's pulse oximetry, pulse, and perfusion index



Dimension : 51 mm x 38.1 mm x 7 mm



## Features

- > With the monitoring function of pulse oxygen, pulse rate, perfusion index and variation index
- > Patient model: adult, child and newborn
- > Real-time transmission module working status: hardware status, software status and sensor status
- > It has the function of setting the average time of calculation parameters, and obtains the response time of different calculation parameters
- > When the blood perfusion index is as low as 0.075%, the measurement is accurate and reliable, which can meet the application of surgery and ICU
- > Adopt advanced anti-motion algorithm, with strong anti-motion performance

## Specifications

SPO2	PR
Range: 0~100%	Range: 25~250bpm
Accuracy: $\pm 2\%$ (70%~100%) Undefined(0~69%)	Accuracy: $\pm 2$ bpm
Resolution: 1%	Resolution: 1bpm

PI	PVI
Range: 0~20%	Range: 100%
Accuracy: Undefined	Accuracy: Undefined
Resolution: 0.001%	Resolution: 1%

## Electrical Specifications

Power supply	DC 5 V $\pm 5\%$
Power consumption	$\leq 3$ W
Communication	TTL,USART
Temperature	Operating 10°C~ 40°C (50°F ~ 104°F)    Storage -20°C~ 70°C (4°F ~ 158°F)

## Compliance

Standard	IEC 80601-2-61:2011 IEC 60601-1-2
----------	--------------------------------------